

KOMATSU

PC450-8

PC450LC-8

PC450LC-8 HD

NET HORSEPOWER
257 kW 345 HP @ 1.900 rpm

OPERATING WEIGHT
PC450-8: 44.350 - 45.190 kg
PC450LC-8: 45.000 - 46.500 kg
PC450LC-8 HD: 46.500 kg

BUCKET CAPACITY
max. 3,50 m³

PC
450

HYDRAULIC EXCAVATOR



PC450-8/LC-8/LC-8 HD

ecot3

WALK-AROUND

A unique machine with unrivalled benefits

The PC450-8 is a rugged, productive, all-European machine. Designed and expressly built for European markets, it delivers outstanding productivity, reliability and operator comforts in a robust, environmentally friendly package. Komatsu's exclusive, on-board, HydraMind system assists in all operations, providing enhanced machine performance that's always perfectly matched to the task.

Effective fuel management

Improved fuel consumption

Through total Komatsu development and control of the engine, hydraulic and electrical systems.

Revolutionary machine management

Track and monitor your machine anytime, anywhere for total peace of mind.



New short boom
PC450LC-8 HD is
greatly increasing

NET HORSEPOWER
257 kW 345 HP

OPERATING WEIGHT
PC450-8: 44.350 - 45.190 kg
PC450LC-8: 45.000 - 46.500 kg
PC450LC-8 HD: 46.500 kg

BUCKET CAPACITY
max. 3,50 m³

Total operator comfort

Low-noise cab

Operator ear noise is as low as an average passenger car.

Large TFT monitor

Improved operator interface through Komatsu-developed information technology.
(TFT: Thin Film Transistor)

Complete safety

New, safe SpaceCab™

Tubular design developed specifically for hydraulic excavators to protect the operator in the event of a roll over accident.



ecot3
ecology & economy - technology 3

Protecting the environment

The Komatsu SAA6D125E-5 engine meets EU Stage IIIA and EPA Tier III emission regulations.
29% NOx reduction.

m
s equipped with a new short boom
lift capacity.



TOTAL OPERATOR COMFORT

Wide, spacious cab

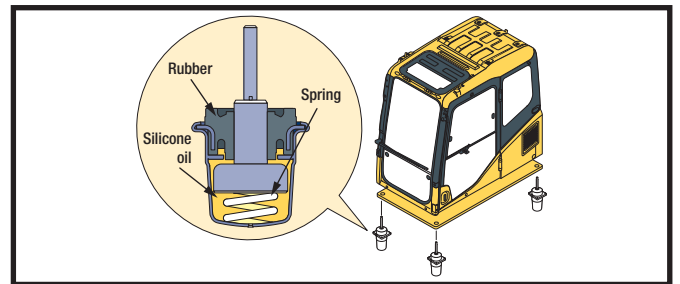
The newly designed, wide and spacious cab includes a heated air suspension seat with reclining backrest. The seat height and longitudinal inclination are easily adjusted using a pull-up lever. You can also set the operational posture of the armrest and the position of the console to suit your needs. Reclining the seat further enables you to place it into the fully flat state with the headrest attached.

Low-noise design

The newly designed cab is highly rigid and has excellent sound absorption ability. Thorough improvement of the noise source reduction technology and the use of low-noise engine, hydraulic equipment and air conditioner mean this machine generates very low noise levels, similar to that of a passenger car.

Pressurised cab

An air conditioner and air filter are fitted as standard. Together with a higher internal air pressure (60 Pa), they reduce dust entry into the cab.

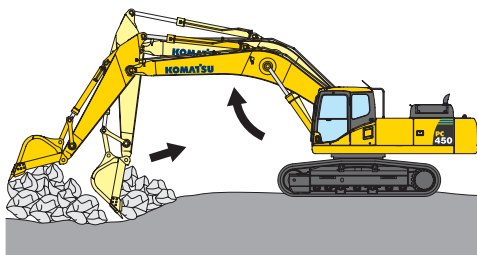


Low vibration with cab damper mounting

A multi-layer viscous mount system incorporates a longer stroke and the addition of a spring. The new cab damper mounting combined with a high-rigidity deck reduces vibration at the operator's seat.

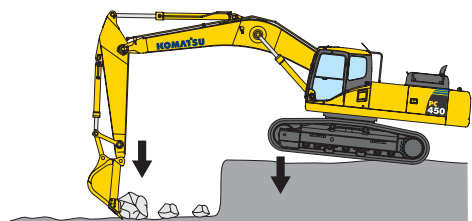
Two-mode boom control

Smooth mode



Boom floats upward, reducing lifting of machine front. This facilitates gathering blasted rock and scraping down operations.

Power mode



Boom pushing force is increased, ditch digging and box digging operation on hard ground are improved.



Automatic air conditioner

Joysticks with proportional control button for attachments



Additional working lamps (option)

Hot and cool box



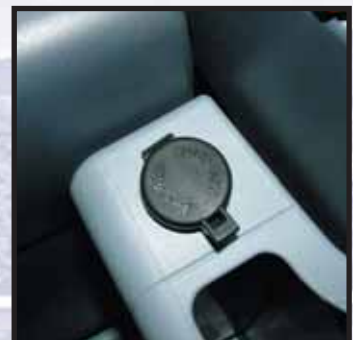
Quick-coupler piping standard

Bottle holder and magazine rack



Large sun roof with integrated sun shade

12 Volt power supply



Outer air filter
Easy removal/installation of the air conditioner filter element, without tools facilitates cleaning.

Radio



TOTAL OPERATOR COMFORT

New, large TFT monitor

EMMS (Equipment Management and Monitoring System)

The EMMS is a highly sophisticated system, controlling and monitoring all the excavator functions. The user interface is highly intuitive and provides the operator with easy access to a huge range of functions and operating information.

Large multi-lingual TFT monitor

A large user-friendly color monitor enables safe, accurate and smooth work. Screen visibility is improved through a TFT liquid crystal display that can be easily read at various angles and in various lighting conditions.

- Simple and easy-to-operate switches
- Industry first function keys facilitate multi-function operations
- Displays data in 10 languages to support operators around the world

On-screen symbols

- 1 Auto-deceleration
- 2 Working mode
- 3 Travel speed
- 4 Engine water temperature gauge
- 5 Hydraulic oil temperature gauge
- 6 Fuel level gauge
- 7 Eco-gauge
- 8 Function switch menu

Basic operation switches

- 1 Auto-deceleration
- 2 Working mode
- 3 Travel speed
- 4 Buzzer cancel
- 5 Window wiper
- 6 Window washer



Working mode	Application	Advantage
P	Power mode	<ul style="list-style-type: none"> • Maximum production/power • Fast cycle times
E	Economy mode	<ul style="list-style-type: none"> • Excellent fuel economy
B	Breaker mode	<ul style="list-style-type: none"> • Optimum engine RPMs and hydraulic flow
L	Lifting mode	<ul style="list-style-type: none"> • Hydraulic pressure has been increased by 7%
ATT	Attachment mode	<ul style="list-style-type: none"> • Optimum engine RPMs, hydraulic flow, 2 way



Monitor function

The controller monitors engine oil level, coolant temperature, battery charge and air clogging, etc. If the controller finds any abnormality, it is displayed on the TFT.



Maintenance function

The monitor indicates when the replacement interval has been reached for the oil and filters.



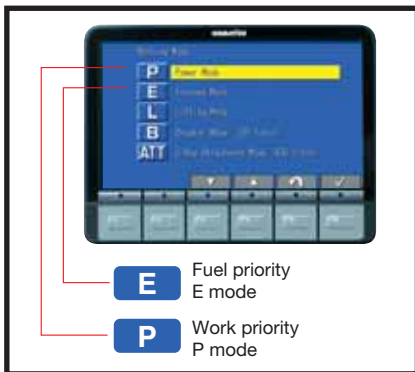
Fingertip hydraulic pump oil flow adjustment

From the TFT monitor, you can automatically select the optimal hydraulic pump oil flow for breaking, crushing and other operations in the B and ATT modes. In addition, the flow to the attachment is automatically reduced during simultaneous operation with other working equipment. This ensures smooth motion of all working equipment. Hydraulic pump oil flow adjustment for both attachment lines is now possible.





EFFECTIVE FUEL MANAGEMENT



Working modes

Two established work modes are further improved.

P mode - Power or work priority mode has low fuel consumption, but fast equipment speed, maximum production and power are maintained.

E mode - Economy or fuel priority mode further reduces fuel consumption, but maintains P mode-like working speed for light operations.

You can select Power or Economy modes using a one-touch operation on the monitor panel depending on workload.



Eco-gauge

Eco-gauge assists energy-saving operations

The Eco-gauge can be seen on the right hand side of the monitor. Working within the green range for environmentally friendly, energy-saving operations reduces CO₂ emissions and fuel consumption.



Idle caution

To prevent unnecessary fuel consumption, an idling caution is displayed on the monitor if the engine idles for 5 minutes or more.



Auto-deceleration

Auto-deceleration

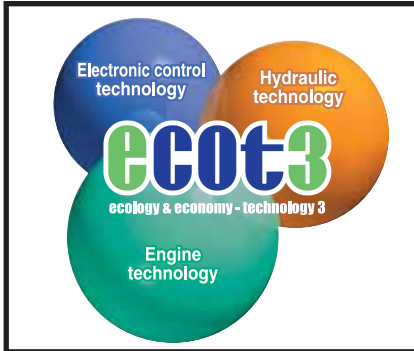
The auto-deceleration can be activated by a switch on the monitor. If the control levers and the foot pedals are in neutral position, the engine speed is automatically lowered to reduce fuel consumption.

Using the auto-deceleration function can save up to 40% fuel.

PROTECTING THE ENVIRONMENT



New ECOT3 engine



With its newly developed Komatsu ECOT3 engine, the PC450-8 significantly reduces hourly fuel consumption through highly efficient techniques for matching the engine and hydraulic unit. It also includes a number of features to promote energy-saving operation such as the variable E mode and Eco-gauge.

- Electronic control system
- High pressure common rail fuel injection
- Cooled exhaust gas recycling system
- New combustion system
- Air-to-air cooling system



MAINTENANCE FEATURES

Easy maintenance

Komatsu designed the PC450-8 to have easy service access. By doing this, routine maintenance and servicing are less likely to be skipped. This can mean a reduction in costly downtime later on. Here are some of the many service features found on the PC450-8:

Side-by-side cooling

The oil cooler and radiator are installed side by side. As a result, it is very easy to clean the radiator, etc. In addition, the operator can remove and install the aftercooler, radiator and oil cooler in a short time.



Water separator

This is standard equipment which removes any water that has become mixed with the fuel, preventing fuel system damage.

Easy access to the engine oil filter and fuel drain valve

The engine oil filter and fuel drain valve are mounted remotely to improve accessibility.





REVOLUTIONARY MACHINE MANAGEMENT

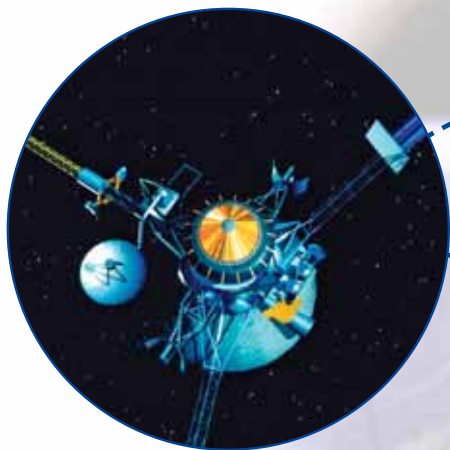
KOMTRAX

The Komatsu Tracking System, KOMTRAX™, provides a revolutionary new way to monitor your equipment, anytime, anywhere. It lets you pin-point the precise location of your machines and obtain real-time machine data. Using GPS location and communication satellite technology, it's designed to be future proof and will meet your demands today and tomorrow.

Komtrax will help you to answer the three most important questions you have about your machine:

- Is the machine making money
- Is the machine safe
- Is the machine in good health

For more details, please ask your distributor for a copy of the Komtrax brochure.



Check machine location



Annual working hour record

Machine	Working Hours	Fuel Consumption	Working Speed	Working Time
PC450-8	100	1000	100	100
PC450-8	200	2000	200	200
PC450-8	300	3000	300	300



Customer



Caution and periodic maintenance

Date	Event	Location	Severity
2010-01-01	Caution	Site A	High
2010-01-05	Maintenance	Site B	Medium



KOMTRAX™ server

Check service meter



Working record (fuel level, hours etc.)

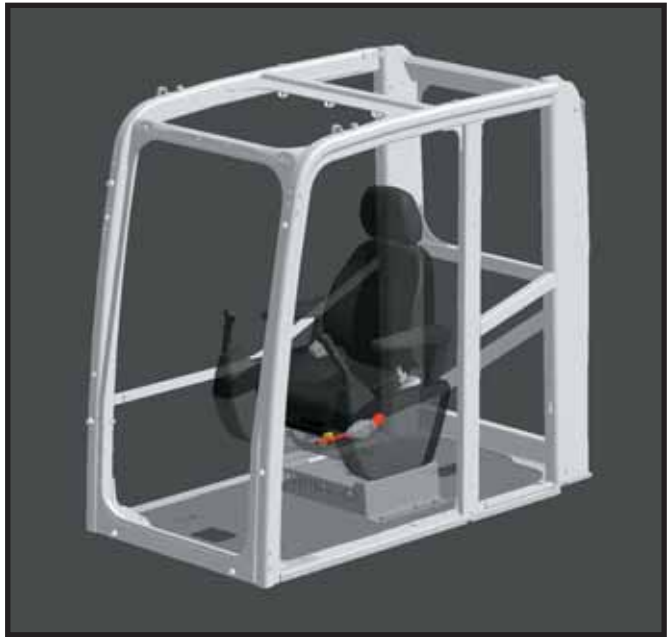
Date	Working Hours	Fuel Level	Working Speed	Working Time
2010-01-01	100	1000	100	100
2010-01-02	200	2000	200	200
2010-01-03	300	3000	300	300

There are certain countries where KOMTRAX™ is not yet available, please contact your distributor when you want to activate the system. Komtrax will not operate if the satellite signal is blocked or obscured.

COMPLETE SAFETY

New, safe SpaceCab™

Specifically developed for Komatsu excavators, the new cab is designed with a tubular steel frame. The framework provides high durability and impact resistance with very high impact absorbancy. The seat belt keeps the operator in the safety zone of the cab in the event of a roll over.



Rear view camera system standard

Lock lever

Locks the hydraulic pressure to prevent unintentional movement. Neutral start function only allows machine to be started in lock position.



Anti-slip plates

Highly durable anti-slip plates maintain superior traction performance for the long term.

Arm safety valve

(optional)



Thermal and fan guards

Placed around high-temperature parts of the engine. The fan belt and pulleys are well protected.



Large side-view, rear, and sidewise mirrors

Enlarged left-side mirror and addition of rear and side mirror allow the machine to meet the new ISO visibility requirements.

Pump/engine room partition

Prevents hydraulic oil from spraying onto the engine to reduce the risk of fire.

Audible travel alarm

Auto shut-off refuel pump

The new auto shut-off refuel pump prevents fuel spills onto hot or electrical areas, and prevents wasting fuel.

HEAVY DUTY FEATURES

The PC450LC-8 HD has been designed to stand up to the hardest working conditions while maintaining maximum performance. High strength materials and advanced manufacturing techniques combine to produce top quality machine assemblies.



New short boom

The new 6.670 mm boom has been developed to enhance lift capacity and productivity in tough loading applications. It features all the advanced features of other Dash 8 models – minimal welds, single piece top and bottom plates, cast foot and point.



Undercarriage protection

The standard full length track roller guards ensure the machines running gear is protected from rock damage.



OPG top and front guard (option)

The optional bolt-on OPG (Operation Protection Guard) top guard and front guard are available for operations in jobsites where there is high possibility of falling rocks or debris. OPG level 2 for top and front guard according to ISO 10262.



Double grouser track shoes

These heavy duty, durable track shoes are fitted as standard. They increase traction and add considerably to the weight of the machine, further enhancing stability.



SPECIFICATIONS



ENGINE

Model Komatsu SAA6D125E-5
 Type..... Common rail direct injection, water-cooled, cooled EGR, emissionised, turbocharged, after-cooled diesel
 Rated capacity 257 kW/345 HP (ISO 9249 Net)
 at engine speed 1.900 rpm
 No. of cylinders 6
 Bore x stroke..... 125 x 150 mm
 Displacement..... 11,04 ltr
 Battery 2 x 12 V/140 Ah
 Alternator..... 24 V/60 A
 Starter motor 24 V/11 kW
 Air filter type Double element type with monitor panel dust indicator and auto dust evacuator
 Cooling Suction type cooling fan with radiator fly screen



HYDRAULIC SYSTEM

Type.....HydrauMind. Closed-centre system with load sensing and pressure compensation valves
 Additional circuits..... 2 additional circuits with proportional control can be installed
 Main pump2 variable displacement piston pumps supplying boom, arm, bucket, swing and travel circuits
 Maximum pump flow..... 2 x 345 ltr/min
 Relief valve settings
 Implement380 bar
 Travel380 bar
 Swing285 bar
 Pilot circuit33 bar



ENVIRONMENT

Engine emissions Fully complies with EU Stage IIIA and EPA Tier III exhaust emission regulations
 Noise levels
 LwA external 107 dB(A) (2000/14/EC Stage II)
 LpA operator ear..... 71 dB(A) (ISO 6369 dynamic test)



OPERATING WEIGHT (APPR.)

PC450/LC-8: Operating weight, including 7.060 mm one-piece boom, 2.900 mm arm, 2.200 kg bucket, operator, lubricant, coolant, full fuel tank and the standard equipment.

PC450LC-8 HD: Operating weight, including 6.670 mm heavy LC duty short boom, 2.400 mm arm, 2.300 kg bucket, operator, lubricant, coolant, full fuel tank and the standard equipment.

PC450-8			PC450LC-8		PC450LC-8 HD	
Triple grouser shoes	Operating weight	Ground pressure	Operating weight	Ground pressure	Operating weight	Ground pressure
600 mm	44.350 kg	0,84 kg/cm ²	45.000 kg	0,86 kg/cm ²	-	-
700 mm	44.760 kg	0,73 kg/cm ²	45.450 kg	0,74 kg/cm ²	-	-
800 mm	45.190 kg	0,64 kg/cm ²	46.020 kg	0,66 kg/cm ²	-	-
900 mm	-	-	46.500 kg	0,59 kg/cm ²	-	-
Double grouser shoes						
600 mm	-	-	-	-	46.500 kg	0,82 kg/cm ²



SWING SYSTEM

Type..... Axial piston motor driving through planetary double reduction gearbox
 Swing lock..... Electrically actuated wet multi-disc brake integrated into swing motor
 Swing speed..... 0 - 9 rpm
 Swing torque 132 kNm



DRIVES AND BRAKES

Steering control 2 levers with pedals giving full independent control of each track
 Drive method.....Hydrostatic
 Travel operation..... Automatic 3-speed selection
 Gradeability 70%, 35°
 Max. travel speeds
 Lo / Mi / Hi3,0 / 4,4 / 5,5 km/h
 Maximum drawbar pull..... 34.000 kgf
 Brake system..... Hydraulically operated discs in each travel motor



UNDERCARRIAGE

Construction X-frame centre section with box section track-frames
 Track assembly
 Type Fully sealed
 Shoes (each side) 46 (PC450), 49 (PC450LC/HD)
 Tension Combined spring and hydraulic unit
 Rollers
 Track rollers (each side).....7 (PC450), 8 (PC450LC/HD)
 Carrier rollers (each side)..... 2



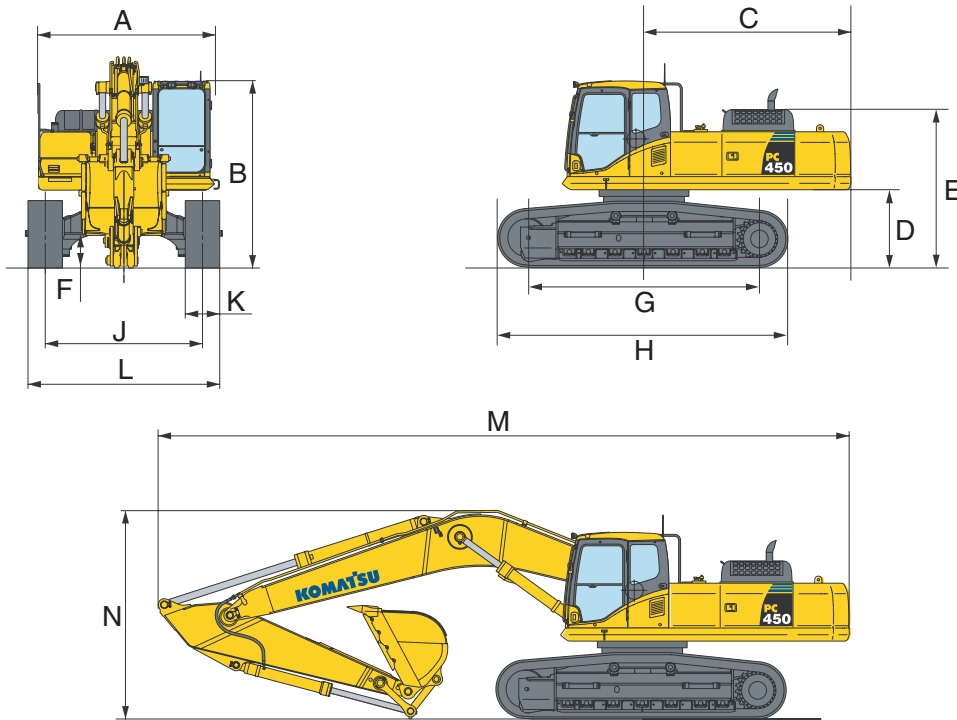
COOLANT AND LUBRICANT CAPACITY (REFILLING)

Fuel tank 650 ltr
 Radiator..... 34 ltr
 Engine oil 38 ltr
 Swing drive..... 13,4 ltr
 Hydraulic tank 248 ltr
 Final drive (each side)..... 12 ltr

MACHINE DIMENSIONS

MACHINE DIMENSIONS		PC450-8	PC450LC-8 / HD
A	Overall width of upper structure	2.995 mm	2.995 mm
B	Overall height of cab	3.250 mm	3.250 mm
C	Tail swing radius	3.645 mm	3.645 mm
D	Clearance under counterweight	1.320 mm	1.320 mm
E	Machine tail height (to top of engine cover)	2.920 mm	2.9520 mm
F	Ground clearance	685 mm	685 mm
G	Tumbler center distance	4.020 mm	4.350 mm
H	Track length	5.055 mm	5.355 mm
J	Track gauge	2.890 mm	2.890 mm
K	Track shoe width	600, 700, 800 mm	600, 700, 800, 900 mm
L	Overall track width with 600 mm shoe	3.490 - *2.990 mm	3.490 - *2.990 mm
	Overall track width with 700 mm shoe	3.590 - *3.090 mm	3.590 - *3.090 mm
	Overall track width with 800 mm shoe	3.690 - *3.190 mm	3.690 - *3.190 mm
	Overall track width with 900 mm shoe	-	3.790 - *3.290 mm

* Transport dimensions (retracted)



TRANSPORT DIMENSIONS PC450/LC-8		ARM LENGTH				
		2.400 mm	2.900 mm	3.400 mm	4.000 mm	4.800 mm
M	Transport length	11.905 mm	11.995 mm	12.040 mm	11.950 mm	11.795 mm
N	Overall height (to top of boom)	3.850 mm	3.745 mm	3.660 mm	3.885 mm	4.435 mm

TRANSPORT DIMENSIONS PC450LC-8 HD		ARM LENGTH		
		2.400 mm	2.900 mm	3.400 mm
M	Transport length	11.530 mm	11.590 mm	11.570 mm
N	Overall height (to top of boom)	3.570 mm	3.720 mm	3.660 mm



BUCKET OPTIONS & DIGGING FORCES

Specifications and equipment may vary according to regional availability

PC450/LC-8

BUCKET AND ARM COMBINATION			ARM LENGTH				
Bucket width	Bucket capacity (SAE heaped)	Bucket weight	2,4 m	2,9 m	3,4 m	4,0 m	4,8 m
1.000 mm	1,34 m ³	1.450 kg	○	○	○	○	○
1.200 mm	1,69 m ³	1.650 kg	○	○	○	○	○
1.500 mm	2,20 m ³	1.940 kg	○	○	○	○	○
1.600 mm	2,40 m ³	2.040 kg	○	○	○	○	□
1.800 mm	2,76 m ³	2.180 kg	○	○	○	□	△

PC450LC-8 HD (with 6.670 mm heavy duty short boom)

BUCKET AND ARM COMBINATION			ARM LENGTH	
Bucket width	Bucket capacity (SAE heaped)	Bucket weight	2,4 m	2,9 m
1.500 mm	2,20 m ³	1.940 kg	○	○
1.600 mm	2,40 m ³	2.040 kg	○	○
1.800 mm	2,76 m ³	2.180 kg	○	○
2.000 mm	3,10 m ³	2.310 kg	□	□
2.200 mm	3,50 m ³	2.450 kg	△	△

- Material weight up to 1,8 t/m³
- Material weight up to 1,5 t/m³
- △ Material weight up to 1,2 t/m³

Please consult with your distributor for the correct selection of buckets and attachments to suit the application. The recommendations are given as a guide only, based on typical operating conditions.

BUCKET AND ARM FORCE (ISO)					
Arm length	2,4 m	2,9 m	3,4 m	4,0 m	4,8 m
Arm crowd force	24.200 kgf	24.400 kgf	20.400 kgf	18.100 kgf	15.800 kgf
Arm crowd force at power max.	25.900 kgf	26.200 kgf	21.800 kgf	19.400 kgf	17.000 kgf
Bucket digging force	26.100 kgf	26.100 kgf	26.100 kgf	26.100 kgf	26.100 kgf
Bucket digging force at power max.	28.000 kgf	28.000 kgf	28.000 kgf	28.000 kgf	28.000 kgf

Options



Special versions

These specifications for the PC450-8 are available as well:

- Demolition specification (mono/straight boom)
- High-reach demolition specification (27 m working height)

Please consult your distributor for a special brochure and availability.

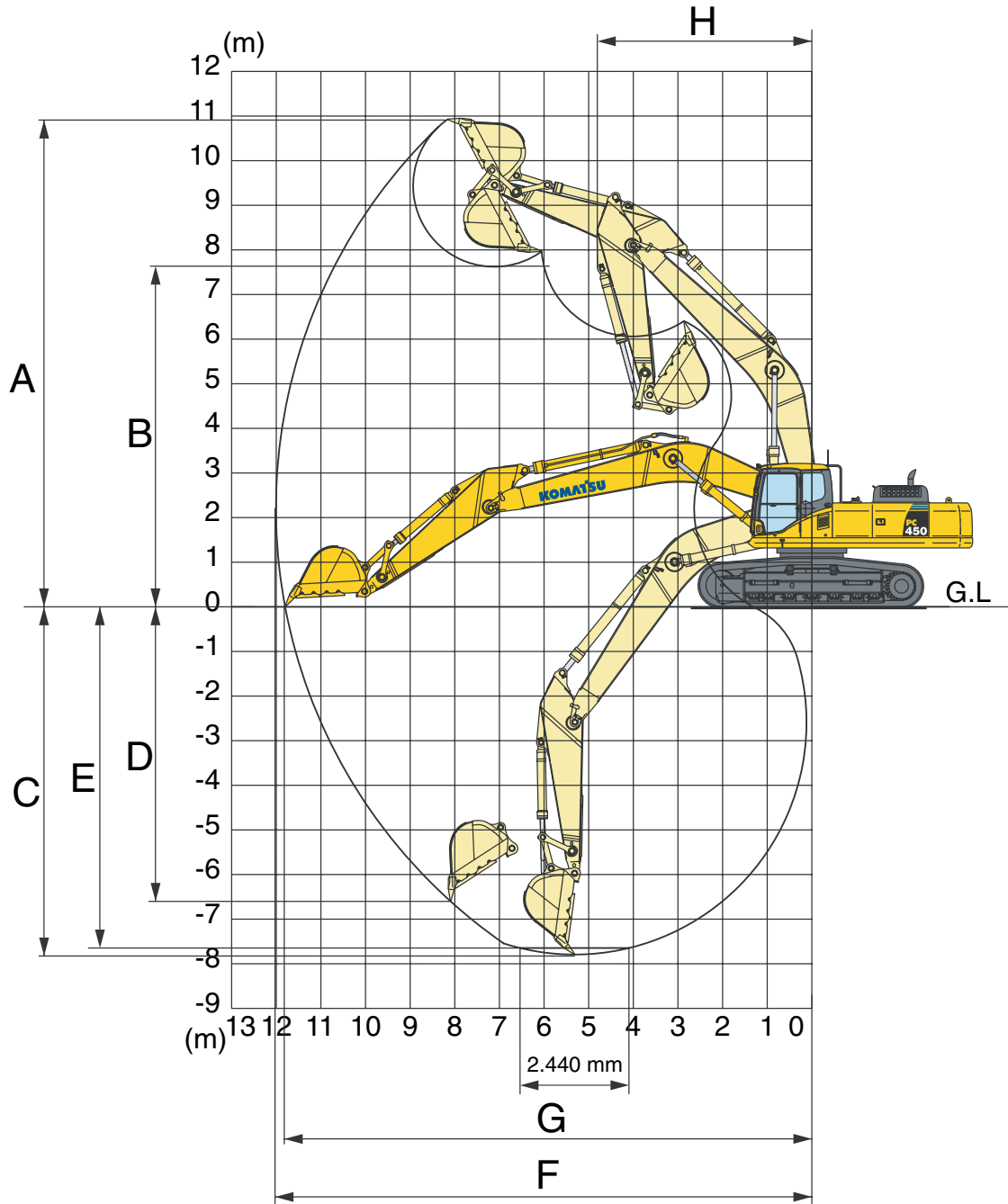


Buckets & GET

A wide range of attachments is available. Please consult your distributor for details of the full range.

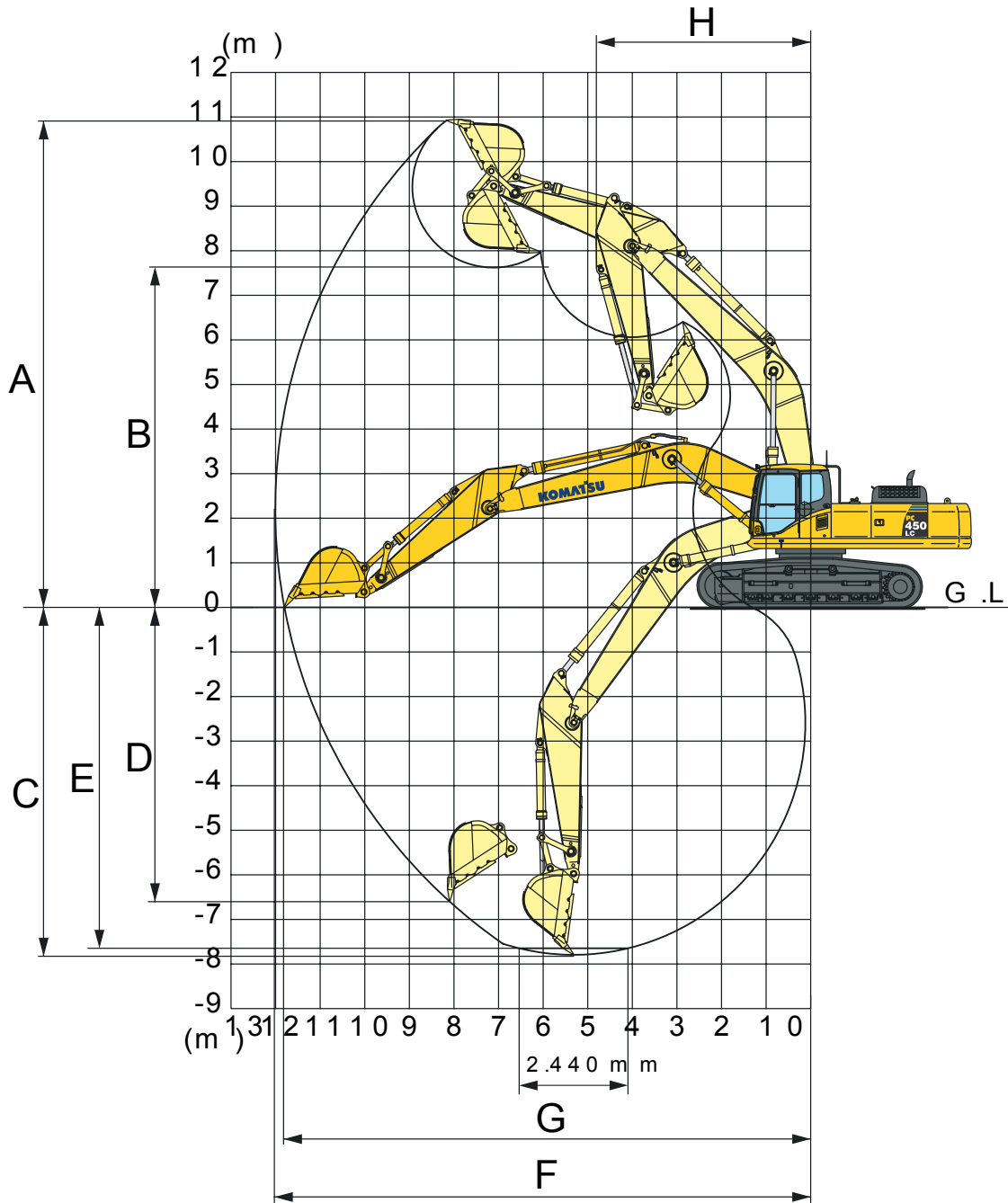
WORKING RANGE

PC450/LC-8



ARM LENGTH		2.400 mm	2.900 mm	3.400 mm	4.000 mm	4.800 mm
A	Max. digging height	10.310 mm	10.285 mm	10.925 mm	11.025 mm	11.485 mm
B	Max. dumping height	7.070 mm	7.080 mm	7.625 mm	7.715 mm	8.145 mm
C	Max. digging depth	6.845 mm	7.345 mm	7.790 mm	8.445 mm	9.255 mm
D	Max. vertical wall digging depth	5.305 mm	5.700 mm	6.600 mm	7.285 mm	8.150 mm
E	Max. digging depth of cut for 2,44 m level	6.650 mm	7.155 mm	7.650 mm	8.315 mm	9.145 mm
F	Max. digging reach	11.080 mm	11.445 mm	12.005 mm	12.565 mm	13.365 mm
G	Max. digging reach at ground level	10.855 mm	11.230 mm	11.800 mm	12.365 mm	13.180 mm
H	Min. swing radius	4.835 mm	4.810 mm	4.805 mm	4.800 mm	4.885 mm

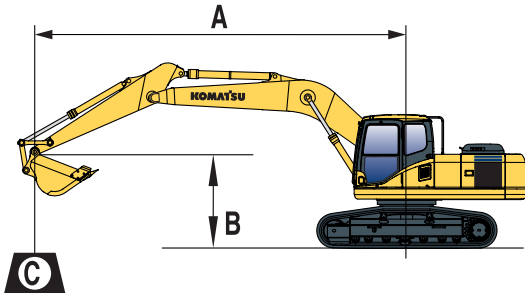
PC450LC-8 HD



ARM LENGTH		2.400 mm	2.900 mm
A	Max. digging height	10.359 mm	10.363 mm
B	Max. dumping height	7.067 mm	7.102 mm
C	Max. digging depth	6.401 mm	6.902 mm
D	Max. vertical wall digging depth	4.876 mm	5.161 mm
E	Max. digging depth of cut for 2,44 m level	6.220 mm	6.741 mm
F	Max. digging reach	10.713 mm	11.083 mm
G	Max. digging reach at ground level	10.481 mm	10.868 mm
H	Min. swing radius	4.245 mm	4.409 mm

LIFTING CAPACITY

PC450-8



A – Reach from swing centre

B – Bucket hook height

C – Lifting capacities, including bucket (1.914 kg), bucket linkage (400 kg) and bucket cylinder (280 kg)

When removing bucket, linkage or cylinder, lifting capacities can be increased by their respective weights.

With 600 mm shoes

– Rating over front

– Rating over side

– Rating at maximum reach

Arm length	A			7,5 m		6,0 m		4,5 m		3,0 m	

 4.800 mm 1.914 kg 1,9 m ³	6,0 m	kg	*4.400	*4.400							
	4,5 m	kg	*4.500	4.050							
	3,0 m	kg	*4.700	3.800	*10.700	8.750	*13.100	12.700	*17.750	*17.750	
	1,5 m	kg	*5.050	3.700	11.850	8.250	*15.450	11.800	*22.150	18.600	
	0,0 m	kg	*5.600	3.750	11.400	7.800	16.350	11.050	*23.700	17.350	
	-1,5 m	kg	5.850	3.900	11.050	7.500	15.850	10.600	*23.050	16.750	*10.800
	-3,0 m	kg	6.400	4.300	10.900	7.350	15.600	10.400	*23.650	16.550	*16.100
	-4,5 m	kg	7.400	5.000	10.850	7.350	15.650	10.400	*21.700	16.750	*22.650

 4.000 mm 1.914 kg 1,9 m ³	6,0 m	kg	*5.800	5.350							
	4,5 m	kg	*6.000	4.800	*10.500	9.150					
	3,0 m	kg	*6.300	4.500	*11.750	8.650	*14.700	12.400	*20.750	19.650	
	1,5 m	kg	6.400	4.400	11.800	8.200	*16.700	11.600	*23.250	18.050	
	0,0 m	kg	6.500	4.450	11.400	7.850	16.300	11.050	*20.450	17.200	
	-1,5 m	kg	6.850	4.700	11.150	7.650	15.950	10.700	*23.250	16.900	*11.150
	-3,0 m	kg	7.650	5.200	11.100	7.550	15.850	10.650	*22.800	16.950	*19.200
	-4,5 m	kg	9.100	6.250	11.150	7.650	*15.500	10.750	*20.100	17.250	*24.850

 3.400 mm 1.914 kg 1,9 m ³	6,0 m	kg	*6.400	5.400	*9.700	8.950					
	4,5 m	kg	*6.600	4.800	*10.700	8.550	*12.900	12.550			
	3,0 m	kg	6.600	4.450	11.700	8.100	*15.100	11.750	*21.100	18.650	
	1,5 m	kg	6.500	4.350	11.250	7.700	16.350	11.050	*16.250	*16.250	
	0,0 m	kg	6.650	4.400	10.950	7.400	15.800	10.550	*16.300	*16.300	
	-1,5 m	kg	7.100	4.750	10.800	7.250	15.600	10.400	*22.000	16.800	
	-3,0 m	kg	8.100	5.400	10.750	7.250	15.650	10.400	*21.200	16.950	*19.850
	-4,5 m	kg	*9.300	6.800	*10.500	7.400	*13.950	10.600	*18.000	17.100	*22.750

 2.900 mm 1.914 kg 1,9 m ³	6,0 m	kg	8.850	6.150	*10.200	8.750					
	4,5 m	kg	7.850	5.400	*11.100	8.350	*13.600	12.250	*18.150	*18.150	
	3,0 m	kg	7.350	4.950	11.550	7.950	*15.700	11.450			
	1,5 m	kg	7.150	4.800	11.100	7.550	16.050	10.800			
	0,0 m	kg	7.350	4.900	10.850	7.300	15.650	10.400			
	-1,5 m	kg	7.950	5.300	10.700	7.200	15.550	10.300	*22.200	16.750	
	-3,0 m	kg	9.250	6.200	10.750	7.250	15.550	10.400	*19.850	17.000	*21.350
	-4,5 m	kg	*10.050	8.200	*9.100	7.450	*12.800	10.650	*16.250	*16.250	*19.250

 2.400 mm 1.914 kg 1,9 m ³	6,0 m	kg	9.700	6.800	*10.950	8.750					
	4,5 m	kg	8.550	5.900	*11.800	8.400	*14.600	12.150			
	3,0 m	kg	7.950	5.450	11.600	8.000	*16.600	11.450			
	1,5 m	kg	7.800	5.300	11.250	7.700	16.150	10.900			
	0,0 m	kg	8.050	5.450	11.000	7.500	15.850	10.600			
	-1,5 m	kg	8.800	5.950	10.950	7.400	15.800	10.600	*17.750	17.100	
	-3,0 m	kg	10.400	7.050	11.050	7.500	*15.100	10.700	*18.650	17.300	*17.750
	-4,5 m	kg	*10.000	9.600			*11.750	11.050	*14.650	*14.650	

* Load is limited by hydraulic capacity rather than tipping.
 Ratings are based on SAE Standard No. J1097.
 Rated loads do not exceed 87% of hydraulic lift capacity or 75% of tipping load.

HYDRAULIC EXCAVATOR

STANDARD EQUIPMENT

- Komatsu SAA6D125E-5, 257 kW turbocharged common rail direct injection diesel engine, EU Stage IIIA compliant
- Double element type air cleaner with dust indicator and auto-dust evacuator
- Suction type cooling fan with radiator fly screen
- Standard counterweight
- In-line filter for hydraulics
- Automatic fuel line de-aeration
- Automatic engine warm-up system
- Engine overheat prevention system
- Engine key stop
- Alternator 24 V/60 A
- Batteries 2 × 12 V/140 Ah
- Starter motor 24 V/11 kW
- Electronic closed-centre load sensing (E-CLSS) hydraulic system (HydrauMind)
- Pump and engine mutual control (PEMC) system
- KOMTRAX™ Komatsu Tracking System
- Multi-function video compatible colour monitor with equipment management monitoring system (EMMS) and efficiency guidance
- 5-working mode selection system; Power mode, economy mode, breaker mode, attachment mode and lifting mode
- PowerMax function
- Auto-deceleration function
- Fuel control dial
- Adjustable PPC wrist control levers with 3 button control and proportional attachment control slider for arm, boom, bucket and swing (suitable for ROTOTILT attachments)
- PPC control levers and pedals for steering and travel
- One additional 2-way proportional service valve (full flow)
- Hydrostatic, 3-speed travel system with automatic shift and planetary gear type final drives, and hydraulic travel and parking brakes
- Reinforced safety SpaceCab™; Highly pressurised and tightly sealed hyper viscous mounted cab with tinted safety glass windows, large roof window with sun shade, pull-up type front window with locking device, removable lower window, front window wiper with intermittent feature, sun roller blind, cigarette lighter, ashtray, luggage shelf, floor mat
- Hot and cool box
- Beverage holder and magazine rack
- Heated air suspension seat with adjustable arm rests and retractable seat belt
- Automatic climate control system
- 12 Volt power supply
- Radio
- Rear view camera system
- Audible travel alarm
- Electric horn
- Track roller guards
- Track frame under-guards
- Lockable fuel cap and covers
- Remote greasing for swing circle and pins
- Auto shut-off refuel pump
- Overload warning device
- Boom safety valves
- Two-mode boom control
- Quick-coupler piping
- Large handrails and r.h. rear-view mirror
- Lights; 2 revolving frame lights and 1 boom light
- Toolkit and spare parts for first service
- Standard colour scheme and decals
- Parts book and operator manual
- Engine ignition can be password secured on request

OPTIONAL EQUIPMENT

- LC undercarriage
- 600, 700, 800, 900 mm triple grouser track-shoes
- 600 mm double grouser track-shoes
- Mono boom (7.060 mm)
- HD short boom (6.670 mm)
- 2,4 m; 2,9 m; 3,4 m; 4,0 m; 4,8 m arms
- Additional hydraulic circuits
- OPG Level II top guard (FOPS)
- OPG Level II front guard (FOPS)
- Full length track roller guards
- Arm safety valve
- Service points
- Bio oil
- Additional working lamps, including cab roof lights, r.h. boom lamp, cw rear lamp and beacon
- Rain visor (not with OPG)
- Lower wiper
- Komatsu buckets
- Komatsu breakers
- Komatsu quick couplers
- Arm safety valve
- Customised paint
- Automatic greasing system
- Further equipment on request

Call the experts



Komatsu Europe International NV
 Mechelsesteenweg 586
 B-1800 VILVOORDE (BELGIUM)
 Tel. +32-2-255 24 11
 Fax +32-2-252 19 81
 www.komatsueurope.com

UESS12601 02/2008

Materials and specifications are subject to change without notice.

KOMATSU is a trademark of Komatsu Ltd. Japan.